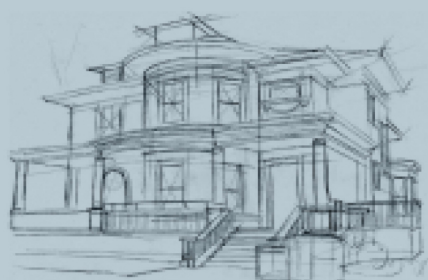




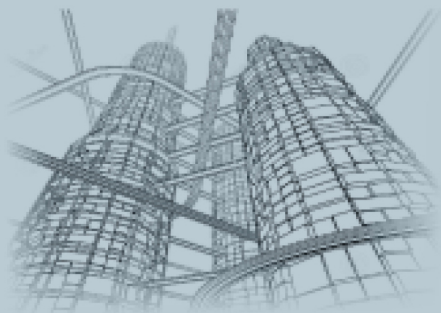
**SCIENTIFIC  
REFRACTORIES**  
Authorized Distributor

# PRICE LIST

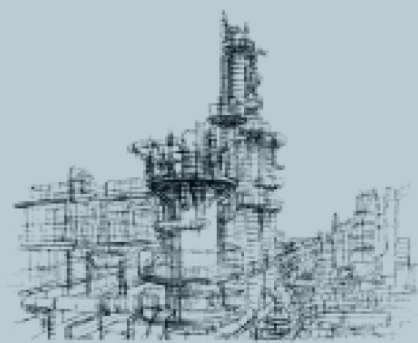
Number: 156; wef 01/05/24



*Domestic*



*Commercial*



*Industrial*

Gun Metal, Brass, Bronze,  
Cast Iron, Stainless Steel  
& Cast Steel

Industrial and Domestic  
**VALVES**





### GUN METAL GATE VALVE IS: 778 CLASS-1, ISI MARKED NON - RISING STEM SCREWED



Testing of Valves is done as per specification under clause - 9 of IS : 778 - 1984, The hydraulic Test pressures are indicated below :-  
**Body Test Pressure** = 1.5 MPa Hyd.  
**Seat & Backseat Pressure** = 1.0 MPa Hyd.

Size	Rate
8/10MM	1056.00
15MM	1056.00
20MM	1403.00
25MM	2108.00
32MM	3016.00
40MM	4026.00
50MM	6172.00
65MM	9988.00
80MM	14805.00
100MM	28537.00

Item Code: GI

### FORGED BRASS BALL VALVE EXCEL (Screwed)



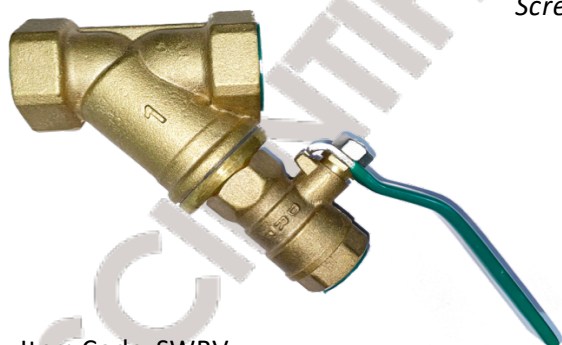
**HYD. Test Pressure**  
Shell : **25kg/cm<sup>2</sup>** (350psig)  
Seat : **16kg/cm<sup>2</sup>** (225psig)

*Single piece design, Full bore,  
Screwed female ends to IS:554/BS  
21/ISO 7, Blow-out stem, Floating  
ball, Lever operated High chrome*

Size	Rate
8/10MM	441.00
15MM	441.00
20MM	614.00
25MM	952.00
32MM	1537.00
40MM	2336.00
50MM	3322.00
65MM	7106.00
80MM	10538.00
100MM	18145.00

Item Code: BVE

### BRASS 'Y' TYPE STRAINER WITH BALL VALVE (SCREWED)



*Screwed female ends*

Size	Rate
15MM	932.00
20MM	1042.00
25MM	1334.00
32MM	2075.00
40MM	2523.00
50MM	4028.00
65MM	6878.00

Item Code: SWBV

### BRASS MULTI CHECK VALVE (Screwed)



**HYD. Test Pressure**  
Shell : **20kg/cm<sup>2</sup>** (285psig)  
Seat : **13kg/cm<sup>2</sup>** (190psig)

*Screwed female ends (BSP) to  
IS:554-1985, Single piece design  
for Vertical or Horizontal lines only.  
One sided flow close automatically  
in reverse flow.*

Size	Rate
15MM	517.00
20MM	766.00
25MM	999.00
32MM	1600.00
40MM	2232.00
50MM	3445.00
65MM	4739.00
80MM	6585.00
100MM	12308.00

Item Code: MC



### BRASS STRAINER 'Y' TYPE (Screwed)



Item Code: BYS

**HYD. Test Pressure**

Shell : **20kg/cm<sup>2</sup>** (285psig)

*Screwed female ends to BSPT,  
Stainless Steel perforated sheet  
screen Fine finish & smooth contours  
reduce pressure drop in strainer.*

Size	Rate
15MM	441.00
20MM	587.00
25MM	882.00
32MM	1580.00
40MM	2124.00
50MM	3703.00
65MM	6183.00
80MM	8407.00

### BRASS DRAIN VALVE For Concealed Fitting (Screwed)



Item Code: BDV

**HYD. Test Pressure**

Shell : **24kg/cm<sup>2</sup>** (340psig)

Seat : **16kg/cm<sup>2</sup>** (225psig)

*Rising stem, Screwed in bonnet, Inside  
screw, Integral seats, Screwed  
female ends (BSP) to IS:554-1985.*

Size	Rate
15MM	1040.00
20MM	1356.00
25MM	1973.00
32MM	2687.00
40MM	4180.00
50MM	5810.00

### BRASS SWING CHECK VALVE (Screwed)



Item Code: SCV

**HYD. Test Pressure**

Shell : **24kg/cm<sup>2</sup>** (340psig)

Seat : **16kg/cm<sup>2</sup>** (225psig)

*Screwed female ends (BSP) to  
IS:554-1985, Screwed in bonnet,  
Specially designed for Horizontal  
as well as Vertical flow metal to*

Size	Rate
15MM	543.00
20MM	769.00
25MM	1054.00
32MM	1894.00
40MM	2419.00
50MM	3836.00
65MM	5889.00
80MM	9170.00
100MM	18301.00

### CARBON STEEL BALL VALVE 3 PCS DESIGN REGULAR BORE SCREWED/ SW ENDS



Item Code: CBV

**HYD. Test Pressure**

Shell : **70kg/cm<sup>2</sup>** (1000psig)

Seat : **35kg/cm<sup>2</sup>** (500psig)

*Body made out of Graded Wrought  
Carbon Steel, Screwed ends to  
BSPT, Full bore, Three piece design,  
Lever operated, Blow out stem,  
Floating ball.*

Size	Rate
15MM	1006.00
20MM	1167.00
25MM	1888.00
32MM	2646.00
40MM	3357.00
50MM	5304.00





SS and MS  
Fittings



**SCIENTIFIC  
REFRACTORIES**  
Pipes | Valves | Fittings

Address- 201-202, New Siyaganj,  
Indore, MP, 452003

+91-9826266295  
+91-9425066295

[pinkeshshahe31@gmail.com](mailto:pinkeshshahe31@gmail.com)



**AAGAM  
SANITATION**

